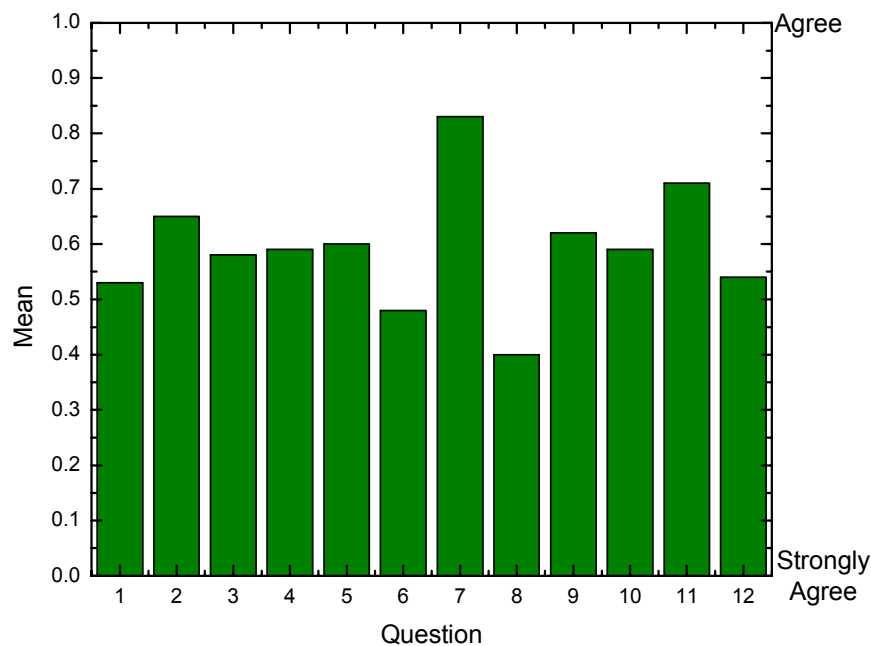


Michigan State University
CEM 141 – Fall 1995
Student Course Evaluation – Scott N. Goldie
Recitation Instructor



Question	Strongly Agree (%) Agree (%) Neutral (%) Disagree (%) Strongly Disagree (%)					N	Mean
	0	1	2	3	4		
1	35.14	58.11	5.41	1.35		74.0	0.53
2	37.84	43.24	12.16	6.76		74.0	0.65
3	35.14	54.05	9.46	1.35	1.35	75.0	0.58
4	31.08	54.05	14.86			74.0	0.59
5	55.41	24.32	13.51	6.76		74.0	0.60
6	60.81	27.03	9.46	2.70		74.0	0.48
7	22.97	32.43	37.84	2.70	1.35	72.0	0.83
8	6.76	6.76				10.0	0.40
9	31.08	35.14	10.81	1.35	1.35	59.0	0.62
10	35.14	51.35	10.81	1.35	1.35	74.0	0.59
11	31.08	45.95	14.86	6.76	1.35	74.0	0.71
12	54.05	32.43	9.46	2.70	1.35	74.0	0.54

Questions:

1. The recitation instructor's organization of the material was satisfactory.
2. I was able to understand the recitation instructor's explanation of the concepts.
3. The recitation instructor was well prepared.
4. The recitation instructor encouraged me to think out problems for myself.
5. I was at ease asking questions during class.
6. I felt welcome to seek help from my recitation instructor.
7. The recitation instructor seemed open to my suggestions for improvement of the recitation.
8. The recitation instructor was available during office hours when I went to see him. (OMIT if you did not try to see him.)
9. The recitation instructor made extra help available, e.g., problem sessions, extra reading, practice problems, solution sets, handouts, etc. (OMIT if not applicable.)
10. The recitation supplemented and did not simply repeat the lecture.
11. The amount of time spent on the discussion of quizzes and/or examinations was appropriate.
12. I would be pleased to have this instructor again.